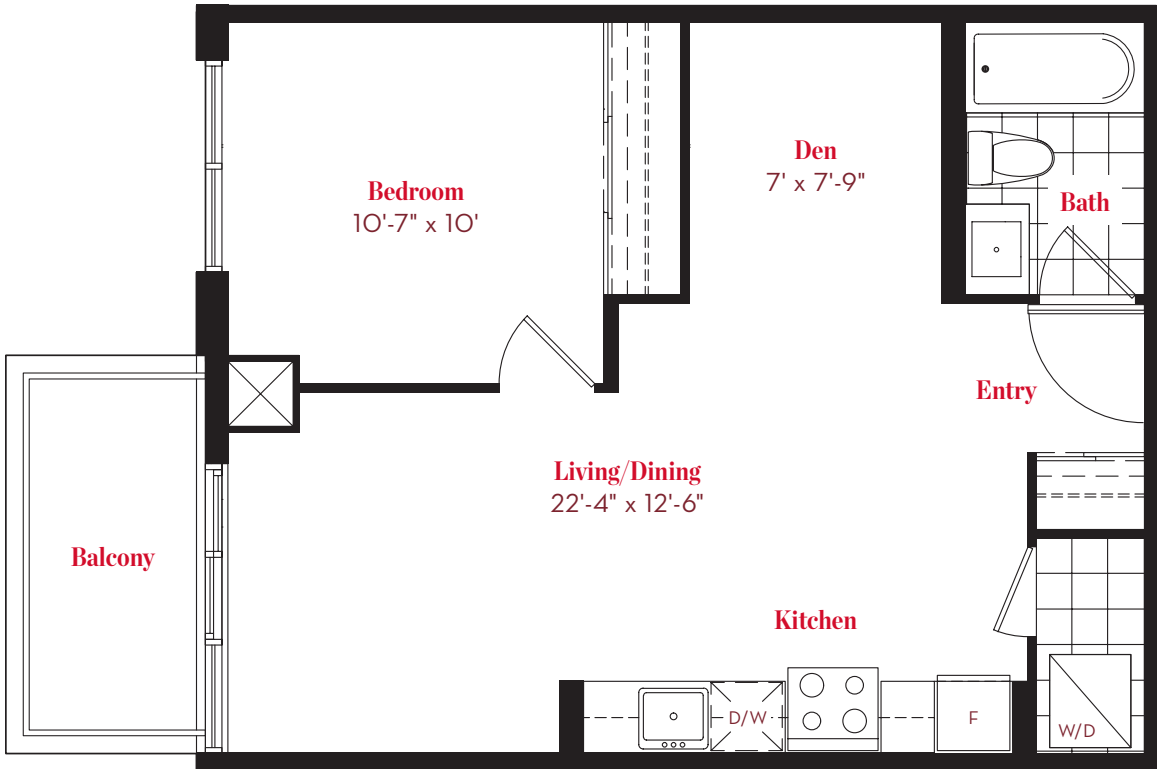
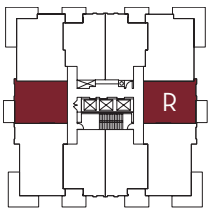


BLOCK
NINE

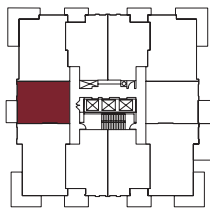
NORTH



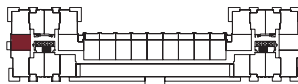
BRICKSTONE MEWS



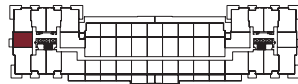
Floor 9-25



Floor 8



7th Floor



6th Floor

THE City Centre ONE BEDROOM + DEN
617 TOTAL SQ FT 556 SQ FT + 61 BALCONY SQ FT

ALL DIMENSIONS, AREAS AND DRAWINGS ARE APPROXIMATE. SIZES AND SPECIFICATIONS ARE SUBJECT TO CHANGE WITHOUT NOTICE.
 ALL ACTUAL USABLE FLOOR SPACE MAY VARY FROM THE STATED FLOOR AREA. BALCONIES SHOWN MAY CONTAIN TERRACE FLOOR TILES
 AND STEP UP TO BALCONY DOOR. SUITE PURCHASED MAY BE MIRROR IMAGE OF FLOOR PLAN LAYOUT SHOWN. E.&O.E. REVISED: 16 APRIL 2015