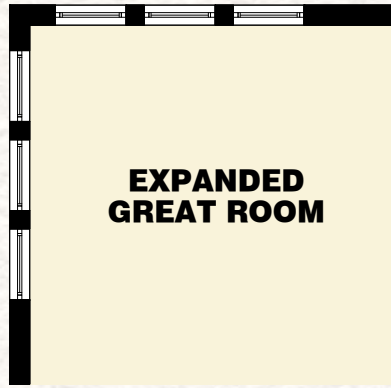


THE SABAL COLLECTION

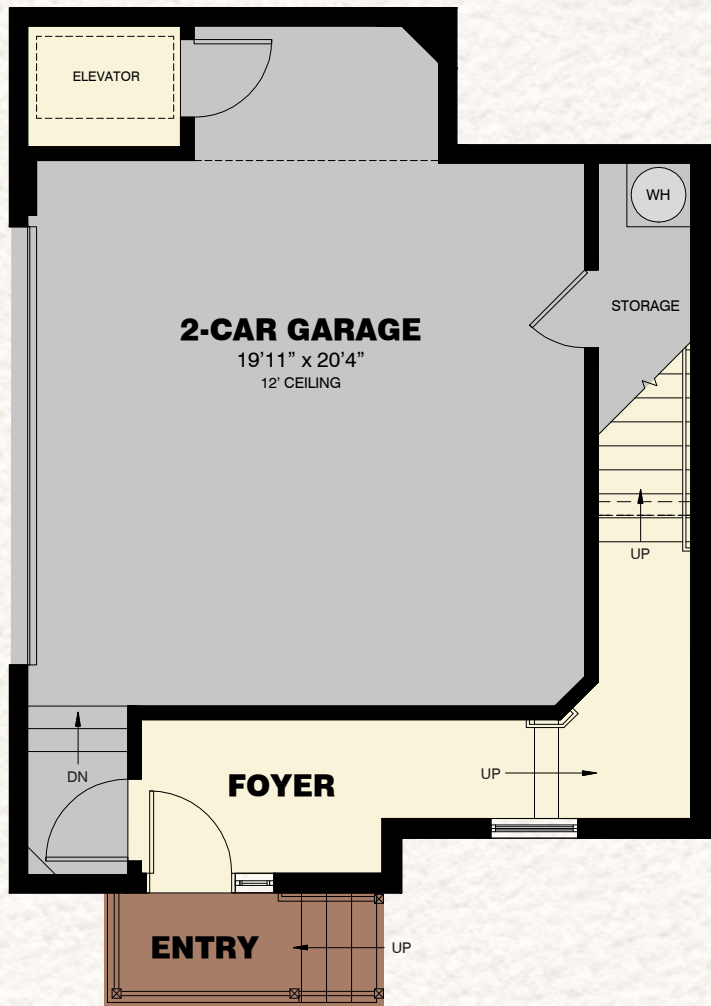
ORCHID

2 Bedrooms / 2 Baths / Den / Sun Room / 2-Car Garage

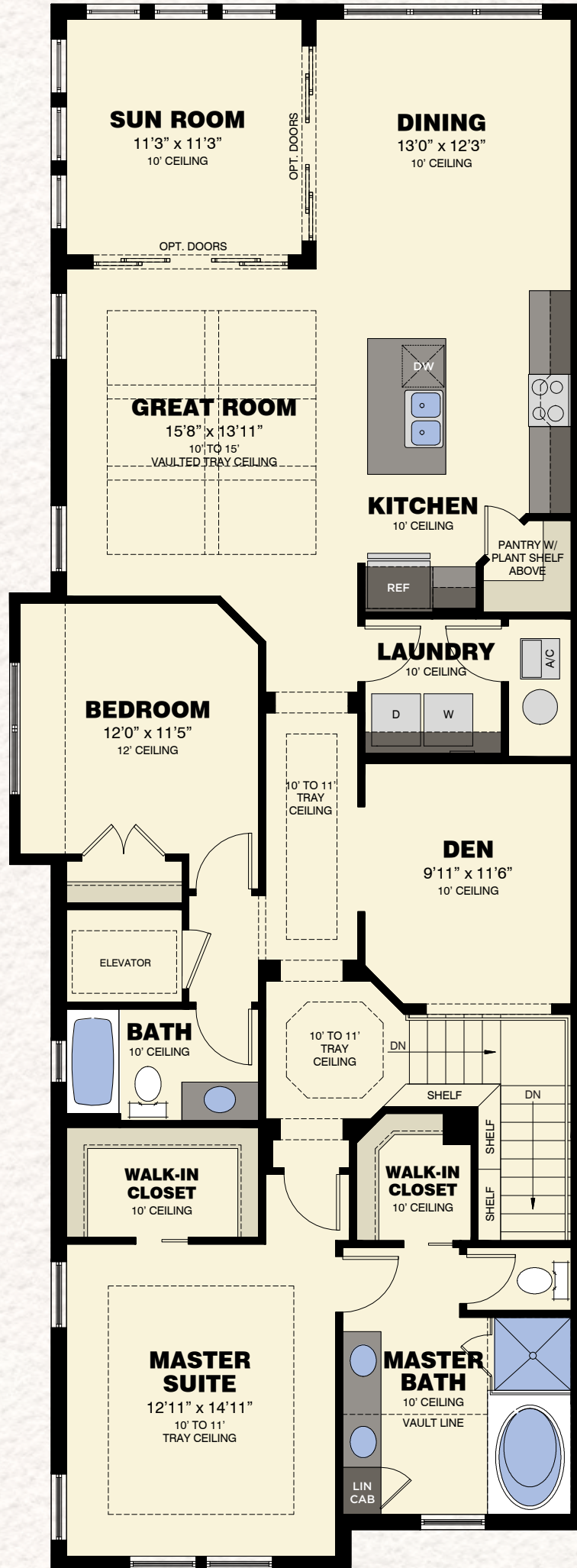
The Isles[™]
OF COLLIER PRESERVE



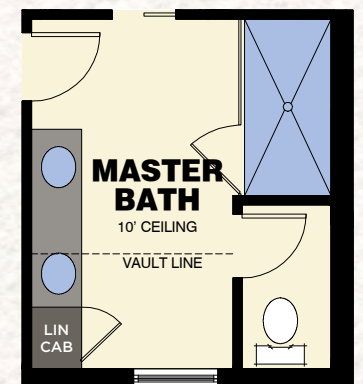
AVAILABLE EXPANDED GREAT ROOM VARIATION



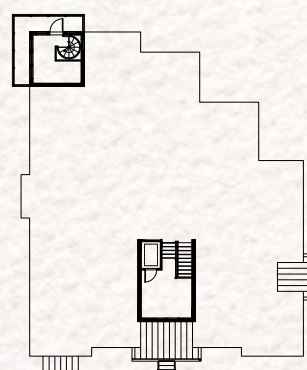
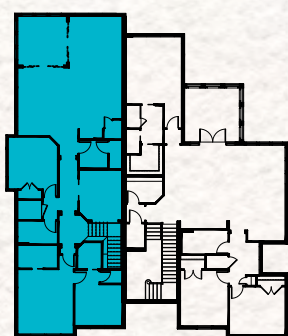
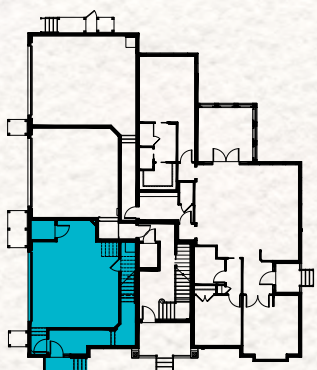
FIRST FLOOR PLAN



SECOND FLOOR PLAN



AVAILABLE MASTER BATH VARIATION



First Floor	144 S.F.
Second Floor	1,867 S.F.
Total Living Area	2,011 S.F.
2-Car Garage w/Storage	557 S.F.
Entry	23 S.F.
Elevator	24 S.F.
Total	2,615 S.F.